

Concrete Accessory Products



www.ealmfg.com



QUALITY * SERVICE * PRICE

It is our goal to be the standard of excellence in our chosen markets by serving our customers with unsurpassed, quality products and service while placing total value on one to one relationships. We know that the customer is the most important person in our relationship, therefore we will do everything we can to help our customer be successful.

EAL MFG is large enough to handle the most demanding production needs and small enough to remain personal and easily accessible. So next time you are in a need of one of our products, do not hesitate to call, E-Mail or send an inquiry through our website. If the product you need is not listed in our catalog or on our website, we can perform custom fabrication specifically to meet your needs.

To existing customers we appreciate and value your support and loyalty. To our potential new customers, we welcome you to the EALMFG Family.

Sincerely,



Ray Harper

General Manager



INTRODUCING OUR



STATE OF THE ART
EPOXY LINE
REBAR & SMOOTH ROUND
40ft to 60ft
#3 to #16



At E.A.L, we do everything we can to ensure your success! The individual relationship we have with each customer is the most important factor in our business, and we're constantly thinking of ways to help your business compete in a complete marketplace across the U.S. Over the years, the demand for Epoxy coated rebar and smooth round has increased; limiting sources, driving costs skyward, and impeding our customers' ability to compete. E.A.L has created a solution, expanding to a new facility and adding a state-of-the-art 12 bar coating line that can coat sizes from 3/8ths to 2-inch diameter. Send us your steel to coat, or we can coat from our huge inventory!



**ASK US
FOR
DETAILS**



CRSI
CERTIFIED

Used to form a radius line

for a curbing or paving machine to follow

Yellow Fiberglass Radius Board 11/64" X 5/8"

12' - #3740



Orange Fiberglass Radius Board 1/4" x 1-1/4"

16' - #3716 20' - #3720

Fiberglass Rod 3/8"

16' - #3725

20' - #3735



Splice Clip

for Yellow 11/64"x5/8" Fiberglass Board #3745



for Orange 1/4"x1-1/4" Fiberglass Board #3900

Splice Clip

for 3/8" Fiberglass Rod #3920



Lattice Clip

Clip attaches to a threaded rod which allows insertion of fiberglass board.



for Yellow 11/64"x5/8" Fiberglass Board #3750

for Orange 1/4"x1-1/4" Fiberglass Board #3200

Metal Radius Clip for Tubing

Clip attaches to either a threaded rod or slotted rod which allows insertion of either CPVC or PVC 3/4" tubing.



7/8" clip for CPVC - #3400

1-1/16" clip for PVC - #3500

1-5/16" clip for PVC - #3600



Metal Radius Clip for Fiberglass Rod

Clip attaches to either a threaded rod or slotted rod which allows insertion of 3/8" fiberglass rod.



3/8" clip - #3375

Plastic Radius Clip for tubing

Corrosion resistant clip attaches to a threaded rod which allows insertion of 3/4" tubing.

7/8" clip for CPVC - #3400P
1-1/16" clip for PVC - #3500P



Saw cut steel dowels available in:

1/2" diameter	7/8" diameter	1-1/4" diameter	1-3/4" diameter
5/8" diameter	1" diameter	1-3/8" diameter	2" diameter
3/4" diameter	1-1/8" diameter	1-1/2" diameter	

Custom cut to length

Finishes:

Plain, Red Oxide, Epoxy and Galvanized

Stainless Steel Dowels are also available by Special Order

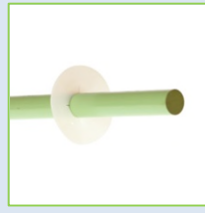


Metal Dowel Cap
Installed on dowels to allow movement in expansion joints

- 1" x 5" - #MDC1
- 1-1/4" x 5" - #MDC1-1/4
- 1-1/2" x 6" - #MDC1-1/2
- 1-1/2" x 10" - #MDC1-1/2x10

Plastic Dowel Cap
Corrosion resistant plastic cap installed on dowels to allow movement in expansion joints

- 1/2" x 4" - #PDC1/2
- 5/8" x 4" - #PDC5/8
- 3/4" x 4" - #PDC3/4
- 1" x 4" - #PDC1
- 1-1/8" x 4" - #PDC1-1/8
- 1-1/4" x 4" - #PDC1-1/4
- 1-1/2" x 4" - #PDC1-1/2



Grout Retention Ring for Dowels
Used for retention of grouting material to improve dowel support



- For 1" Dowel - #GRR1
- For 1-1/4" Dowel - #GRR1-1/4

Other sizes available



Epoxy Spray Paint
Used to touch up dowels and baskets. Fast drying, long lasting, VOC compliant Meets ASTM D3963 specifications

#EPCSPRAYPAINT-A





B-Broom

B-Brooms are water resistant brooms manufactured to install on the rear of a paving machine, to drag across the wet cement for a textured finish, similar to a Tine Broom. Each broom is 6' long with 24" long polypropylene bristles. Each bristle is .140 wide (slightly larger than 1/8").

#1015



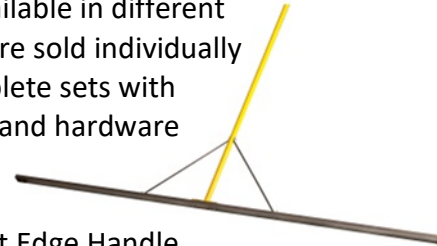
Curb Darby

A Curb Darby is a handheld tool used in finishing concrete. (1" x 2" rectangle steel blade in specified length with welded handles)

- 4' Curb Darby - #6268
- 6' Curb Darby - #6267
- 8' Curb Darby - #6266
- 10' Curb Darby - #6265
- 12' Curb Darby - #6264



Straight Edge Handles and Blades Available in different sizes and are sold individually or as complete sets with brace sets and hardware included.



- 12' Straight Edge Handle #6225
- 16' Straight Edge Handle #6220

- 10' Straight Edge Blade #6230
- 12' Straight Edge Blade #6235
- 16' Straight Edge Blade #6240

10' Straight Edge Complete w/ 12' Handle #6245

10' Straight Edge Complete w/ 16' Handle #6246

12' Straight Edge Complete w/ 16' Handle #6249

12' Straight Edge Complete w/ 12' Handle #6250

16' Straight Edge Complete w/ 16' Handle #6253

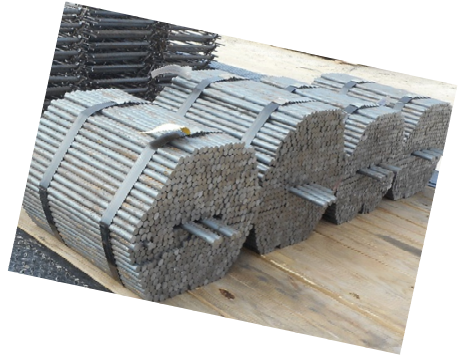
Accessories:

Two Piece Brace Set w/ Hardware – Support braces for attaching handle to blade (includes wing nuts and bolts) #6251



Hardware for Straight Edges – Hardware for attaching handle to blade (bolts and wing nuts, 5 pieces each, for brace sets) #6252



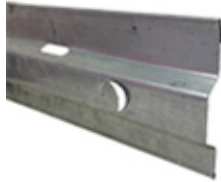


A galvanized steel cold joint left permanently in concrete slabs. Manufactured in 10' lengths with dowel knockouts



Two Way Keyway

For slab depths of 4" - # 350KW
 For slab depths of 5" - # KW450
 For slab depths of 6" - # KW550
 For slab depths of 8" - # KW750



Nail On Keyway

24ga #1065
 26ga #1055
 30ga #1054



24ga with Legs for 5" Paving #1067
 24ga with Legs for 6" Paving #1060A
 24ga with Legs for 7" Paving #1068
 24ga with Legs for 8" Paving #1061A
 24ga with Legs for 9" Paving #1063
 24ga with Legs for 10" Paving #1062
 24ga with Legs for 11" Paving #1064
 24ga with Legs for 12" Paving #1066



Pee Wee Keyway

24ga @ 30" c/c #1084A
 24ga @ 12" c/c #1085A
 24ga with Legs for 6-7" Paving @ 30" c/c #1087A



Standard Keyway

24ga 1" Holes @ 12" c/c #1091
 24ga 1" Holes @ 24" c/c #1090
 24ga 1" Holes @ 30" c/c #1094A



24ga with Legs for 8-1/2" Paving 1" Holes @ 30" c/c #1092A

24ga with Legs for 10" Paving 1" Holes @ 30" c/c #1093A

24ga with Legs for 12" Paving 1" Holes @ 30" c/c #1095A



24ga with Legs for 8-1/2" Paving 1" Holes @ 24" c/c #1096A





Two-Way Keyway Stake

Installs through Two-Way Keyway to support keyway during installation or can be used for nailing form board

- 12" - #12NSTK
- 15" - #15NSTK
- 18" - #18NSTK
- 24" - #24NSTK



Flexible Screed Cap

Slides over two-way keyway to form a space for grout at expansion joint

- 1/2" Removable 375' Roll #1560
- 3/8" Removable 500' Roll #1561
- 3/8" Non-Removable 375' Roll #1562



Splice Clip for Two-Way Keyway

Corrosion resistant, plastic splice for joining two-way keyway end to end

#355KW



Marking Pin/ Keyway Stake

Stake/Pin with angled point on one end

- .250 x 12" - #7766
- .306 x 12" - #7780
- .306 x 14" - #7767
- .306 x 15" - #7768

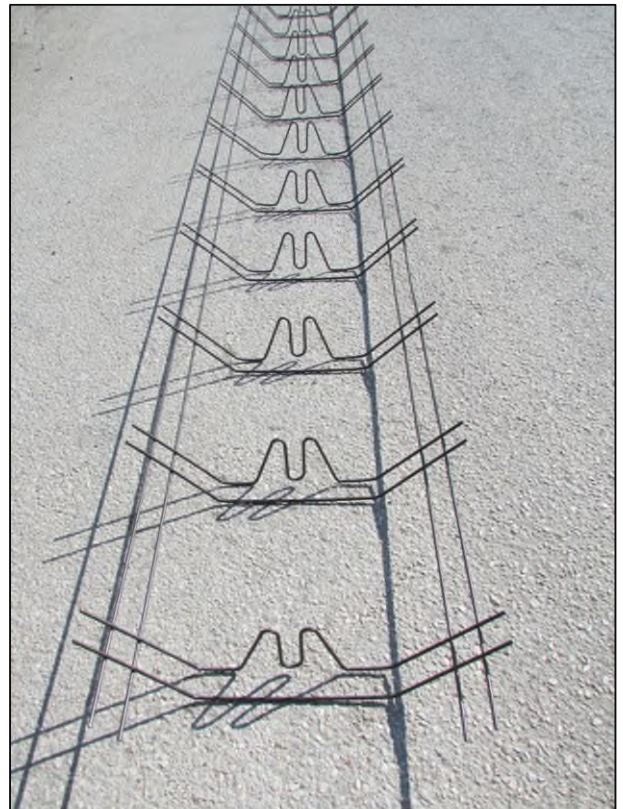


12' Loose Frame Baskets are pre-formed baskets made to support dowels at half the paving height. Loose Frame Baskets can be used as a contraction or an expansion basket. The actual length of the basket is 11' 6" (12' billable basket).

- Basket is fabricated from .177ga wire with dowel spacing at 12" centers (12 dowel slots per basket).
18" centers upon request for 6"-8" paving
- The center expansion is formed to hold 3/4" board

Baskets support up to 1-1/8" dowels
for 6"-8" Paving #8000
for 8"-10" Paving #8006
for 10"-12" Paving #8015

Baskets support up to 1-1/4" dowels
for 8"-10" Paving #8106
for 10"-12" Paving #8115





Basket Clips

A steel clip with formed indentation to fit over bottom runner of basket to attach to subgrade

#7744



Basket Stake

Fits over bottom of basket to attach to sub grade

12" .306ga stake with 2" .306ga crosswire welded 2" from top- #7773

15" .306ga stake with 2" .306ga crosswire welded 2" from top- #7774

19" .306ga stake with 2" .306ga crosswire welded 2" from top- #7775

Boxes of 100/ea or can be put in drums upon request.



60D Nail Stake

6" long 60D Nail Basket Stake with 2" long crosswire

#7745



Steel pipe bollards are available in 2", 3", 4", 5", 6", 8", & 10" diameters. Bollards are available in light, standard and heavy wall thicknesses. Custom cut to length. Painting and galvanizing is also available.

Used as a protective barrier around buildings and parking lots.



Can be installed in sub surface or fitted with base plates for above ground application.



Pipe Sleeve provides a protective, attractive cover for Pipe Bollards. Designed to absorb impact to protect both cars and the structures they surround. Sleeve has two recessed reflective stripes to increase visibility. Made of 1/8" thick high density plastic. Contains ultraviolet and antistatic to resist fading and endure extreme temperatures. Available in many different sizes and colors.



P-Stake

Supports dowel or tie bar in concrete pavement. Fabricated from .306 ga. wire. Common loop is 1", can be made for different dowel sizes. Custom lengths available.

- 9" - #PS9
- 12" - #PS12
- 15" - #PS15
- 24" - #PS24



P-Stake with Stop

Supports dowel or tie bar in concrete pavement with stop bar that can be welded to specified height. Fabricated from .306 ga. wire. Common loop is 1", can be made for different dowel sizes. Custom lengths available.

- 10" - #PS10WS
- 12" - #PS12WS
- 15" - #PS15WS



Spade Stake

11" spade stake for up to #6 bar Made of heavy duty 18ga steel with 13/16" dowel hole. Stake is pointed at one end for better penetration of subgrade.

#7900





Form Pin Stakes

Form Pin Stakes (also known as line pin stakes, pegs, and solid stakes.) are steel pins with forged points on one end. Line Stakes have chiseled points to prevent rotation of stake and for easier penetration of subsurface. These stakes are solid without holes. They are used for form pins, stringline set up, and general staking purposes. They are heavy duty which allows the stake to be reused multiple times. Form Pin Stakes are available in 1/2" through 1" diameters, made to specified lengths.



Jackjaw Stake Extractor

Extracts 3/4" and 7/8" stakes from sub grade

14" #4970



3/4" – 1" Stake Puller

Extracts 3/4", 7/8", and 1" stakes from sub grade.

#4975



Nail Stakes

Nail stakes are steel pins with points to allow them to be driven in to the subsurface with ease. Nail Stakes have holes drilled alternately every 3" to 6". Once the stakes are inserted into the ground, the holes allow the nailed attachment of wood boards or forms.

3/4" x 12" #NS3/4X12

3/4" x 18" #NS3/4X18

3/4" x 24" #NS3/4X24

3/4" x 30" #NS3/4X30

3/4" x 36" #NS3/4X36

3/4" x 42" #NS3/4X42

3/4" x 48" #NS3/4X48

7/8" x 12" #NS7/8X12

7/8" x 18" #NS7/8X18

7/8" x 24" #NS7/8X24

7/8" x 30" #NS7/8X30

7/8" x 36" #NS7/8X36

7/8" x 42" #NS7/8X42

7/8" x 48" #NS7/8X48

**Pencil Rod**

Most commonly used in battered walls and foundations of unusual width where snapties are not practical.

1/4" x 10' #PR1/4x10FT

5/16" x 10' #PR5/16x10FT



SAB Aluminum Bracket

Lightweight dual purpose bracket fits both 3/4" and 7/8" stakes. Clamps to line pin stake for insertion of slotted or threaded rods.

With Hex Bolts and Nuts #2778-B
With L Bolts and Nuts #2778-L



One Piece Bracket w/ Hex Bolts

Zinc plated steel bracket for 3/4" stakes. Clamps to line pin stake for insertion of slotted or threaded rods.

#2101-B



JGM Quick Set Adjustable Bracket

Zinc plated spring steel bracket for 3/4" stakes. Clamps to line pin stake for insertion of slotted or threaded rods. Labor saving because no wrenches are needed for installation. Spring action allows for quick horizontal and vertical adjustment.

#2205



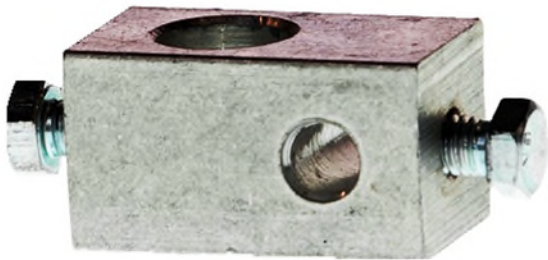
Aluminum Bracket

Lightweight bracket for 3/4" stakes. Threads tapped into body of bracket, no nuts required.

Clamps to line pin stake for insertion of slotted or threaded rods.

With Hex Bolts #2780-B

With Hardened Hex Bolts #2780-BH



Stake Extension Bracket

Plated Bracket connects two stakes to increase height.

#4900



18" Slotted Rod

Zinc plated rod with a slot at one end to support stringline.

#1300



18" Threaded Rod

Zinc plated rod with threaded end allows for attachment of plastic tips, radius or lattice clips.

#1200



Plastic Tips

Manufactured from pliable plastic which allows it to be used in all weather conditions, tips screw on to threaded rod to attach stringline

#3100



Polyester String

1/8" diameter Polyester string with Polyester core, braided for extra strength, used for stringline layouts. The breaking strength is 600lb PSI.

1000' Yellow #STR4300

3000' Yellow #STR4303

5000' Yellow #STR4305

1000' Fluorescent Orange #STR4300-F

3000' Fluorescent Orange #STR4303-F

5000' Fluorescent Orange #STR4305-F

1000' Fluorescent Yellow #STR4350

5000' Fluorescent Yellow #STR4355

1000' White #STR4700-A

3000' White #STR4703

5000' White #STR4705

**Polyester String with Kevlar Core**

1/8" diameter Polyester string with kevlar core. Braided for extra strength. 600 lb PSI breaking strength. Less contraction and expansion than polyester core string.

1000' Yellow #STR4400

3000' Yellow #STR4403

5000' Yellow #STR4405

1000' Fluorescent Orange #STR4400-F

3000' Fluorescent Orange #STR4403-F

5000' Fluorescent Orange #STR4405-F

1000' White #STR4600



Polyester GAC Cable

1/8" string with a braided Polyester outside jacket and a 1/16" Galvanized Aircraft Cable 7x7 strand as core. 480 lb. PSI breaking strength. The yellow filament has red tracers through it for better visibility. This string has minimal contraction and expansion.

1000' Yellow w/ Red Tracers #STR4500
5000' Yellow w/ Red Tracers #STR4505

**Polyethylene String**

1/8" diameter Polyethylene string used for stringline layouts

1000' Yellow #STR4200

**Polypropylene String**

Used for stringline layout, pulling electrical wire, or as tying twine

4500' Orange #STR4100
5500' White 1 ply #STR4105



Seine Twine #18 (Masonry String)

Used for stringline layout in masonry work.

1 lb Braided Yellow #STR4006
1 lb Braided Orange #STR4003
1 lb Braided White #STR4007
1 lb Braided Pink #STR4009
1 lb Braided Black/White #STR4008

1 lb Twisted Yellow #STR4000
1 lb Twisted White #STR4010

1/2 lb Braided Yellow #STR4035
1/2 lb Braided Orange #STR4025
1/2 lb Braided White #STR4017
1/2 lb Braided Pink #STR4030
1/2 lb Braided Dark Green #STR4020

1/2 lb Twisted Fluorescent Yellow #STR4042
1/2 lb Twisted Fluorescent Orange #STR4044
1/2 lb Twisted Fluorescent Green #STR4046
1/2 lb Twisted White #STR4043
1/2 lb Twisted Pink #STR4041



Stringline Frame and Reel (Cox Reel)

Used to roll up and store stringline.
Heavy Duty all metal construction with ball bearing mounted reel. Holds up to 10,000+ ft and has locking pin.
#STR6915



Galvanized Aircraft Cable with Orange Plastic Jacket

Used for stringline layout in lower tolerance projects.

1000' 1/16" Cable (3/32"OD) #STR4800
5000' 1/16" Cable (3/32"OD) #STR4801



Galvanized Aircraft Cable 7 x 7

Used for stringline layouts.

5000' 1/16" Cable #STR4790

Wire Sensor Line (Piano Wire)

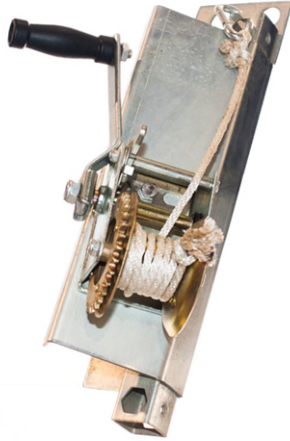
5000' x .50 #STR4834



Modified Winch for Stringline

Winch is mounted on metal base with holes for staking into sub surface enabling the tightening of stringline during the layout process. Plated for weather resistance, has 600 lbs. breaking strength.

#STR6805

**Aluminum Swage Sleeve**

Splices two GAC cables end to end using most crimping pliers.

1/16" #STR4785

3/32" #STR4780

**400 Piece Stringline Kit**

Kit for approx.. 10,000 LFT of paving consists of:

400 pieces #FP3/4x48

400 pieces #2101-B

400 pieces #1200

400 pieces #3100

1 roll #STR4405

1 roll #STR4400

1 each #STR6805

All packaged in wooden export crate.

#979

**350 Piece Stringline Kit**

Kit for approx.. 7,500 LFT of paving consists of:

350 pieces #FP3/4x48

350 pieces #2101-B

350 pieces #1200

350 pieces #3100

4 rolls #STR4405

1 each #STR6805

All packaged in wooden export crate.

#980



Other
custom kits
available



Custom Fabrication

- Grates
- Safety End Treatment
- Base Plates
- Embed Anchors
- Armor Joints
- Embed Angles
- Chase Plates
- Miscellaneous Steel Fabrication

Bare, Painted, or Galvanized

Can be made to DOT Specifications



**Tie Bars &
Multi Piece Tie Bars**



Saw cut steel tie bars available in #4, #5, #6, #7, #8, #9 & #10 sizes. Custom cut to length.

Finishes:
Plain, Red Oxide and Epoxy



Multi Piece Tie Bars

#6 x 50" Multi Piece Tie Bar set includes (1) 25" threaded male and (1) 25" threaded female with coupling. #M1002

#5 x 42" Multi Piece Tie Bar set includes (1) 21" threaded male and (1) 21" threaded female with coupling. #M2002

#4 x 34" Multi Piece Tie Bar set includes (1) 17" threaded male and (1) 17" threaded female with coupling. #M3002

Custom sizes and lengths available.



TWM Lift Insert

The lift insert assembly is easily positioned and tied to the rebar mat. They are the attachment points for the lifting cables during erection of concrete panels.

The insert assembly is available in standard overall heights (tiltwall panel thickness) of 5-1/2", 6", 6-1/2", 7", 7-1/4", 8", 9", 10", 11" and 12". Other sizes available upon request

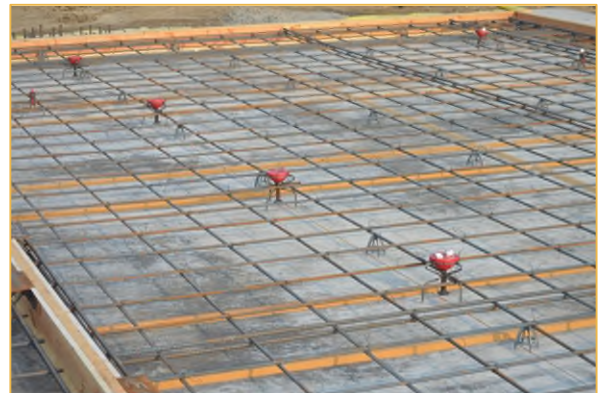
**TWM Lift Clutch**

Attaches to the spherical head of the lift insert. Used for lifting of panel

TWM Brace Insert

Tied to reinforcing bar before pouring of the panel. Allows attachment of tiltwall brace

The insert assembly is available in standard overall heights (tiltwall panel thickness) of 5-1/2", 6", 6-1/2", 7", 7-1/4", 8", 9", 10", 11" and 12". Other sizes available upon request

**TWM 3/4" Inverted Brace Insert**

Used for attaching brace to the outside of the panel when there is insufficient room to attach on the inside of the panel.

TWM Edge Lift Insert

Allows lifting of the panel from the edge of the wall instead of the side.

TWM Shear Bar 23.5"

Supports the positioning of the TWM Edge Lift Insert.

TWM Tension Bar



TWM Pipe Brace Coupler

Coupler that attaches to the pipe brace and pipe brace extension for extending the length of brace

TWM Pipe Brace Extension

Attaches to pipe brace coupler and pipe brace for extending the length of pipe brace.

TWM Pipe Brace

Adjustable steel brace used to temporarily support the panel after lifting.

TWM 3/4" x 3-1/2" Coil Bolt

Secures pipe brace to brace insert on the panel.

TWM 3/4" Coil Wing Nut

Allows for easy installation on 3/4" adjustable coil bolt.

TWM Washer Plate

Acts as a backup washer plate for the coil bolt when attached to a strongback

TWM 3/4" x 18" Adjustable Coil Bolt

Adjustable and attaches strongback to the panel.

Emergency Lift Plate

Used when existing lift anchor is inaccessible or in incorrect position. Bolted to panel.

TWM Spreader Beam

Used for multiple pick points, distributes weight evenly.

TWM Reveal

TWM Barrel Spicket

TWM Clear Resin Base Cure

TWM Bond Breaker/Cure

TWM Barrel Agitator

TWM Barrel Handle

TWM 3.5 Gallon Sprayer

TWM Shim Pack

Full take-off capabilities and detailing plans available.

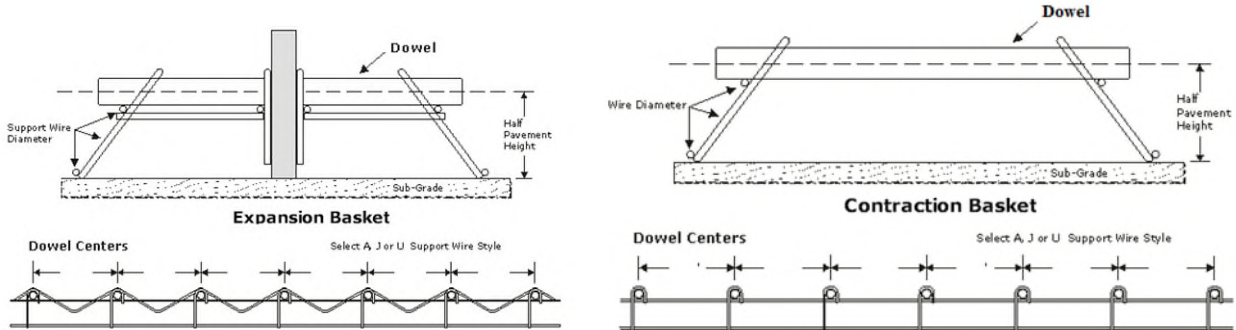


Welded Dowel Assemblies / Load Transfer Baskets

Each order is manufactured to customer specifications

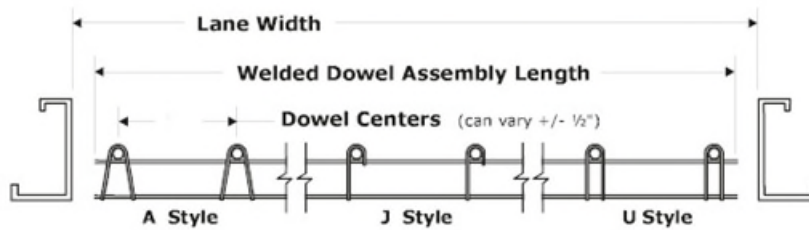
Dowels Coatings Available: Plain, Red Oxide Painted, Epoxy Coated and Galvanized

Side Frame Coatings Available: Plain and Red Oxide Painted



Also available: Tie Bar Baskets, Dummy Baskets and Cantilever Baskets

Meets DOT Specifications



Billable Length = Number of Dowels x Spacing

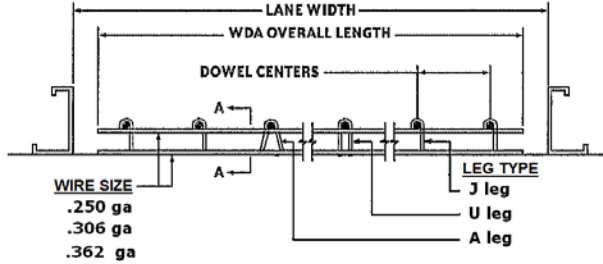
Call For
A Quote
Today!!



800-747-2298 214-630-1154



QUOTE INFORMATION

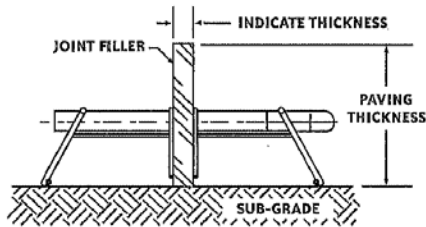


DOWEL COATING SELECTION

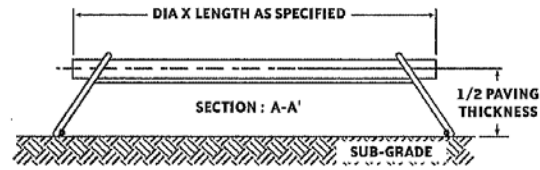
- ◆ Plain
- ◆ 1/2 Red Oxide Painted
- ◆ 3/5 Red Oxide Painted
- ◆ Red Oxide Painted
- ◆ Epoxy Coated With Patched Ends
- ◆ Tectyl Dipped

SIDE FRAME COATING SELECTION

- ◆ Full Dipped Red Oxide Paint
- ◆ Bottom 1" Epoxy Coated



EXPANSION STYLE BASKET



CONTRACTION STYLE BASKET

TODAY'S DATE _____ DATE MATERIAL NEEDED _____

NAME _____ COMPANY _____

EMAIL _____ COATING SPEC REQUIREMENTS _____

PROJECT NAME _____ SHIP TO CITY, STATE _____

Made to Order Baskets

**** Billable Length = Number of Dowels x Center ****

Dowel Size (dia.x.length)	Dowel Coating	Basket Type (Cont. or Expan.)	Pavement Height	Centers	Leg Style	Length of Basket	QTY in EACH	QTY in LFT	Wire Size	# of Dowels	Side Frame Coating

Loose Dowels

Dowel Size (dia.x.length)	Dowel Coating	QTY in EACH	Dowel Size (dia.x.length)	Dowel Coating	QTY in EACH

Other Items Needed (Basket Stakes, P-Stakes, Dowel Caps, ETC)

Item	QTY in EACH	Item	QTY in EACH



Dallas, TX

214-630-1154

Toll Free 800-747-2298

Fax 214-630-1159

www.ealmfg.com